



# XCEL



**DIRECT**  
LED FRAMES



Custom Decorated  
Wood Grain Frame

Custom Decorated  
Carbon Fiber Frame

Available at:

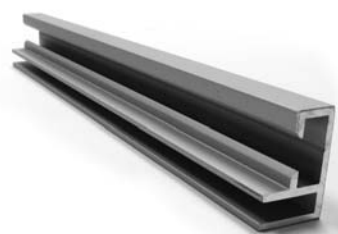


**XCEL**  
FIXTURE  
SHOP.com

## Take your brand to the next *DIMENSION!*

## NONLIT FRAMES

### 15- Basic nonlit



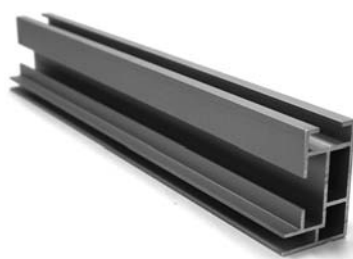
- 15mm Height (5/8")
- Quick assembly using basic corner hardware
- Drill through moulding and screw directly to the wall
- 180° connectors available for unlimited lengths
- Our most economical solution

### 19- Basic nonlit



- 19mm Height (3/4")
- Quick assembly using basic corner hardware
- Wall mounting utilizing our basic wall mount
- Large frames screw directly to the wall
- 180° connectors available for unlimited lengths
- An economical frame

### 27- Big nonlit



- 27mm Height (1")
- Quick assembly using large corner hardware
- Wall mounting utilizing our big wall mount
- Stabilizers for optimum reinforcement
- 180° connectors available for unlimited lengths
- Ceiling Mounts

### 44- Double nonlit



- 44mm Height (1-3/4")
- Suitable for double sided textile print with silicone strip
- Additional reinforcement by large corner hardware
- Frequently used as a free-standing model
- Stabilizers for available optimum reinforcement
- Ceiling pendants for hanging
- 180° connectors available for unlimited lengths
- Various styles of feet available for standing

### 20- Stabilizer



- 20mm Height
- Adds Extra support to larger frames
- Suitable for lit and nonlit frames
- Easily disassembled transport
- 180° connectors available for unlimited lengths

### 21- Stabilizer



- 21mm Height
- Adds Extra support to larger frames
- Suitable for lit and nonlit frames
- Easily disassembled transport

## LED FRAMES

### 33- LED Panel Frame



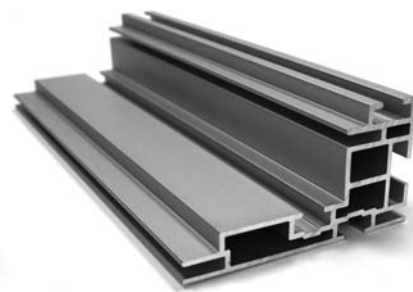
- 33mm Height (1-1/4")
- Suitable for textile printing with silicone strip
- Wall mounting with Install Bar
- Suitable for Guided LED Panels
- 16x20, 20x28, 18x40, 24x36 & 30x40
- Custom size frames available upon request

### 39- LED Panel Frame



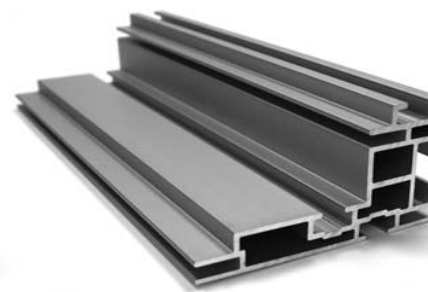
- 39mm Height (1-1/2")
- Suitable for textile printing with silicone strip
- Wall mounting with Install Bar
- Suitable for Direct Backlit
- 180° connectors available for unlimited lengths

### 90- Single Sided



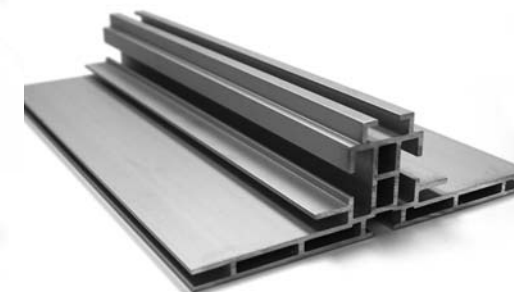
- 90mm Height (3-1/2")
- Suitable for Edge Lit LED Lights
- Stabilizers for available optimum reinforcement
- Ceiling pendants for hanging
- Easily disassembled transport
- 180° connectors available for unlimited lengths
- Various styles of feet available for standing
- Blockout fabric backer can be used for nonlit side

### 120- Single Sided



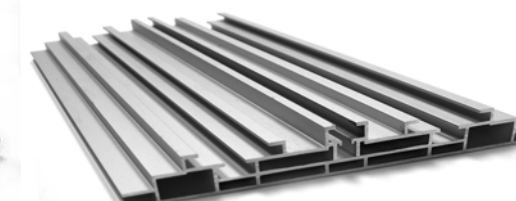
- 120mm Height (4-3/4")
- Suitable for High Power LED lights
- Stabilizers for available optimum reinforcement
- Ceiling pendants for hanging
- Easily disassembled transport
- 180° connectors available for unlimited lengths
- Various styles of feet available for standing
- Blockout fabric backer can be used for nonlit side

### 143- Double Sided



- 143mm Height (5-5/8")
- Suitable for High Power LED Module
- Stabilizers for available optimum reinforcement
- Ceiling pendants for hanging
- Easily disassembled transport
- 180° connectors available for unlimited lengths
- Various styles of feet available for standing
- Additional reinforcement by double large corner hardware

### 200- Double Sided



- 200mm Height (7-7/8")
- Suitable for High Power LED Module
- Stabilizers for available optimum reinforcement
- Ceiling pendants for hanging
- Easily disassembled transport
- 180° connectors available for unlimited lengths
- Various styles of feet available for standing
- Additional reinforcement by double large corner hardware

## ACCESSORIES



- 180° connectors
- Assorted hanging systems
- Corner hardware



- Various styles of feet available for standing



- Textile print with silicone strip

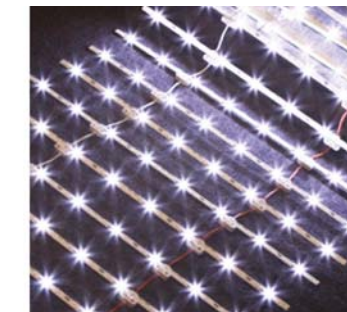
## LED LIGHTS



- Edge Lit LED Light Strips
- Optical lens for uniform light distribution
- Low voltage (24V) energy efficient
- Unlimited lengths



- Guided LED Panel
- Compact, easy to ship
- LED Modules of 5-9 power LED's
- Used with 33-LED Frame



- Lattice LED Lights
- Low voltage (12V) energy efficient
- Used with extra large cabinets



- Direct Backlit
- Direct Backlit
- Low voltage (24V) energy efficient
- 160° light dispersion
- Used with 39-LED Frame

# STRETCHED FABRIC (SEG) FRAMES

**Creative • Innovative • Affordable**

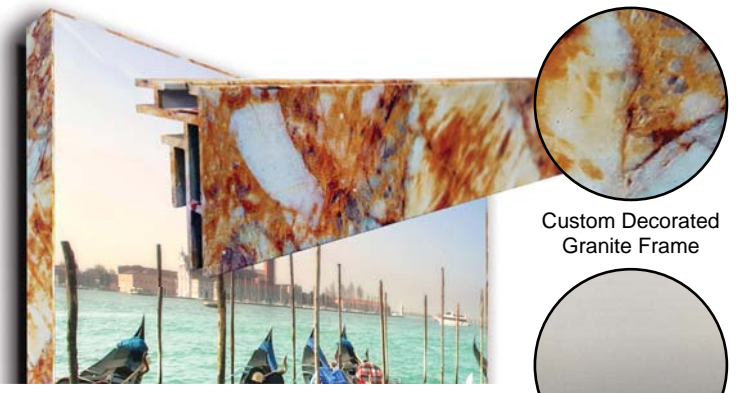
- LED lighting impact
- Durable
- Easily changed
- Compact shipping
- High resolution images
- Light weight
- Large format available
- Recyclable
- Endless applications
- Vibrant color

## WOOD FRAMES



- 100's of wood mouldings available
- With or without LED lighting
- Easy change of your textile fabric
- Custom sizes available

## CUSTOM DECORATION



- 100's of colors & patterns
- With or without LED lighting
- Easy change of your textile fabric
- Custom sizes available

Custom Decorated  
Granite Frame

Standard Frame  
Anodized Aluminum

## Take your brand to the next ***DIMENSION!***

*...with custom fixtures, displays, components and frames,  
available with our revolutionary decorating process.*

Xcel Fixture Shop can design, prototype, manufacture and provide a one of a kind decorated look for your fixtures and displays. Your P.O.P. units or components can appear like real marble, wood, metals, or stone and wrap around any dimensional or rounded surface without sacrificing long term durability. Have you tried traditional methods of laminating, faux painting, or vinyl wrapping only to find these options expensive and lacking realism and durability? We design and manufacture custom displays or work with your specifications to execute your project on time and within budget.

